



ОБУЧЕНИЕ УЧАСТНИКОВ ОЦЕНКИ НАЦИОНАЛЬНОЙ ЦЕПИ ПОСТАВОК (NSCA 2.0)

День 2: Ознакомление с шаблоном анализа CMM

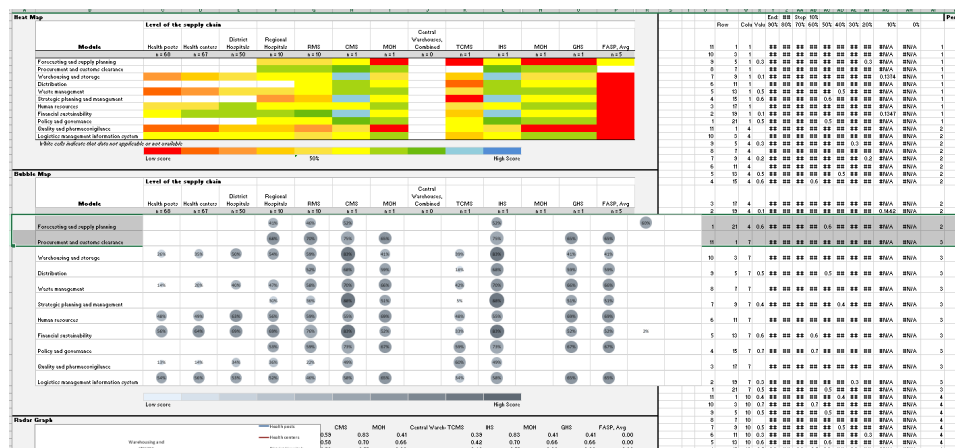


Программа Агентства США по международному развитию (USAID) в отношении глобальной цели поставок в сфере здравоохранения — техническая помощь, целевой заказ на оценку национальной цепи поставок

Листы с информацией об объекте — ввод данных + сводные данные по объекту



Панель управления

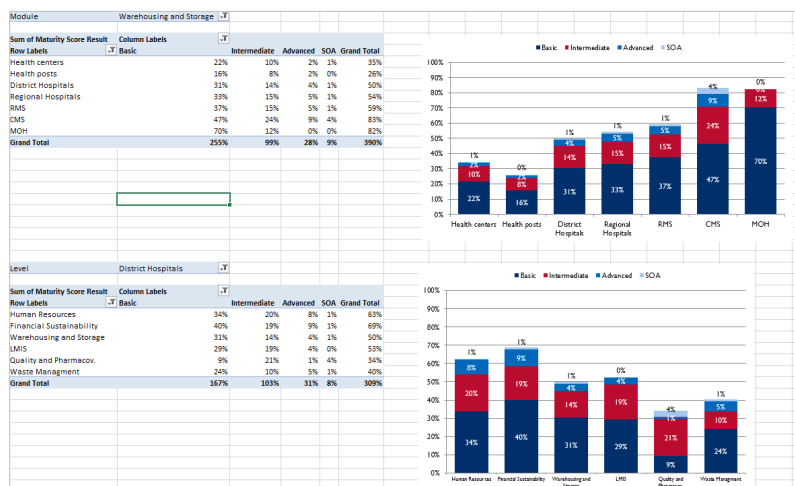


ВСТАВЬТЕ НИЖНИЙ КОЛОНТИТУЛ

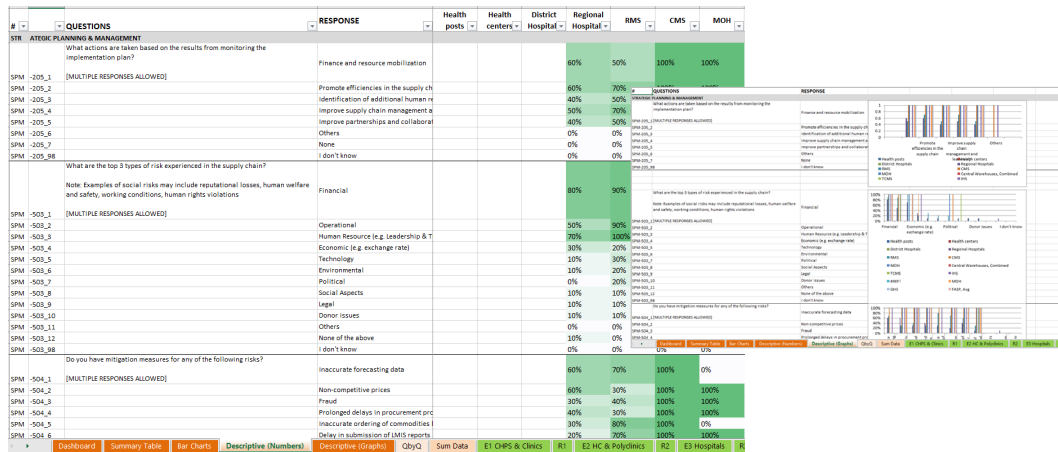
Сводная таблица

1. Maturity Scores												
Module	Health posts n = 68	Health centers n = 67	District Hospitals n = 50	Regional Hospitals n = 10	RMS n = 10	CMS n = 1	MOH n = 1	Central Warehouses, n = 0	TCMS n = 1	IHS n = 1	#REF!	MH n = 1
Warehousing and storage	26%	35%	50%	54%	59%	83%	41%		39%	83%	#REF!	41
Distribution	3% to 42%	18% to 58%	28% to 68%	39% to 66%	50% to 68%	83% to 83%	41% to 41%		39% to 39%	83% to 83%	#REF! ## #REF!	41% t
Waste management	14%	20%	40%	47%	52%	68%	59%		18%	68%	#REF!	55
Strategic planning and management	0% to 41%	0% to 74%	3% to 84%	24% to 87%	33% to 83%	68% to 68%	59% to 59%		18% to 18%	68% to 68%	#REF! ## #REF!	59% t
Human resources	48%	49%	63%	56%	59%	55%	69%		42%	70%	#REF!	66
Financial sustainability	56%	64%	69%	58%	67%	83%	52%		42% to 42%	70% to 70%	#REF! ## #REF!	66% t
Policy and governance	0% to 82%	34% to 90%	49% to 90%	53%	59%	73%	67%		5%	88%	#REF! ## #REF!	51
Quality and pharmacovigilance	13%	14%	34%	36%	22%	49%	0%		5% to 5%	88% to 88%	#REF! ## #REF!	51% t
Logistics management information system	54%	56%	53%	52%	46%	58%	65%		48%	55%	#REF! ## #REF!	65
	0% to 75%	0% to 81%	3% to 79%	13% to 71%	36% to 60%	58% to 58%	65% to 65%		48% to 48%	55% to 55%	#REF! ## #REF!	69% t
									33%	83%	#REF! ## #REF!	52
									59%	73%	#REF!	61
									59% to 59%	73% to 73%	#REF! ## #REF!	67% t
									60%	49%	#REF!	0
									60% to 60%	49% to 49%	#REF! ## #REF!	0% t
									34%	58%	#REF!	65
									34% to 34%	58% to 58%	#REF! ## #REF!	65% t
2. Maturity Scores: Percentage of 'Basic' Items in place												
Module	Health posts n = 68	Health centers n = 67	District Hospitals n = 50	Regional Hospitals n = 10	RMS n = 10	CMS n = 1	MOH n = 1	Central Warehouses, n = 0	TCMS n = 1	IHS n = 1	#REF!	MH n = 1
Warehousing and storage	31%	43%	61%	66%	75%	93%	70%		43%	93%	#REF!	75
Distribution	4% to 54%	21% to 76%	30% to 84%	43% to 81%	65% to 84%	93% to 93%	70% to 70%		43% to 43%	93% to 93%	#REF! ## #REF!	70% t
Waste management	13%	25%	49%	55%	73%	75%	70%		29%	71%	#REF!	61
Strategic planning and management	0% to 50%	0% to 100%	0% to 100%	25% to 100%	43% to 100%	71% to 71%	67% to 67%		29% to 29%	71% to 71%	#REF! ## #REF!	67% t
Human resources	54%	56%	67%	54%	60%	46%	68%		50%	75%	#REF!	75
Financial sustainability	61%	72%	80%	77%	89%	93%	71%		50% to 50%	75% to 75%	#REF! ## #REF!	70% t
									0%	89%	#REF!	81
									0% to 0%	89% to 89%	#REF! ## #REF!	81% t
									54%	46%	#REF!	68
									54% to 54%	46% to 46%	#REF! ## #REF!	68% t

Гистограммы



Описательные вопросы — числа и графики



Вопрос за вопросом*

*мой любимый формат!

#	QUESTIONS	RESPONSE	Health posts	Health centers	District Hospital	Regional Hospital	RMS	CMS	MOH
WS- 1101_5		None	55%	6%	2%	0%	0%	0%	
WS- 1101_98		I don't know	0%	0%	2%	0%	0%	0%	
WS- 1102	Is cold chain equipment maintained according to schedule?	Yes, Physically Verified	19%	48%	54%	60%	80%	100%	
WS- 1103_1	How is temperature monitored in the cold chain storage areas?	Temperature is monitored	36%	74%	80%	70%	80%	0%	
WS- 1103_2	[MULTIPLE RESPONSES ALLOWED]	Temperature is monitored	3%	12%	12%	0%	50%	100%	
WS- 1103_3		Temperature is electronic	1%	3%	4%	0%	30%	100%	
WS- 1103_4		Temperature is electronic	0%	0%	0%	0%	30%	100%	
WS- 1103_5		None of the above	60%	18%	8%	20%	0%	0%	
WS- 1103_98		I don't know	0%	0%	4%	10%	0%	0%	
WS- 1104_1	Which of the following contingency plans are in place to maintain the cold chain in the event of a power or equipment failure?	Generators	11%	22%	92%	90%	90%	100%	
WS- 1104_2		Other secondary/tertiary	0%	5%	8%	10%	0%	0%	
WS- 1104_3		Standby cold chain truck	3%	0%	2%	10%	20%	0%	
WS- 1104_4		Outsourced cold chain	15%	20%	10%	0%	20%	0%	
WS- 1104_5		None of the above	73%	53%	2%	0%	0%	0%	
WS- 1104_98		I don't know	0%	3%	4%	0%	0%	0%	
WS- 1105	Is there a person who is responsible for monitoring the temperature of cold chain infrastructure?	Yes					100%	100%	
	How are cold chain requirements monitored from manufacturer to service delivery point?								
	NOTE: If multiple methods are used, choose the most common method.	Color changing markers					50%	100%	
WS- 1106_1	[MULTIPLE RESPONSES ALLOWED]								
WS- 1106_2		Temperature monitoring					50%	100%	
WS- 1106_3		Electronic temperature					10%	0%	
WS- 1106_4		Electronic temperature					0%	0%	
WS- 1106_5		Others. Please specify.					10%	0%	
WS- 1106_6		They are not monitored					10%	0%	
WS- 1106_98		I don't know					10%	0%	
	Is a lockable cage or cabinet in place for storing controlled and high-value products?								

Средства поддержки — шаблон руководства и планы анализа

